



洋華光電

2010年第四季法人說明會

2011年3月16日

2010 年第四季損益資料

(單位:新台幣百萬元)	2010		2010		QoQ	2009		YoY %
	Q4	%	Q3	%		Q4	%	
營業收入	4,780	100.0	4,719	100	1.3	3,987	100.0	19.9
營業毛利	992	20.8	1,392	29.5	-28.7	1,249	31.3	-20.6
營業費用	365	7.6	450	9.5	-18.9	389	9.8	- 6.2
營業利益	627	13.1	942	20.0	-33.4	860	21.6	- 27.1
營業外收支	-226	-4.7	-29	-0.6	679.3	24	0.6	- 1,041.7
稅前純益	401	8.4	913	19.3	-56.1	884	22.2	- 54.6
稅後純益	330	6.9	810	17.2	-59.3	809	20.3	-59.2
股本(百萬元)	142		133			133		
每股盈餘(元)	2.32		6.09			6.08		
所得稅稅率	17.21%		10.62%			8.50%		

註: 每股盈餘係以期末股本計算
2010年第四季少數股權利益為\$2百萬元

2010年第四季財務資料及主要財務比率

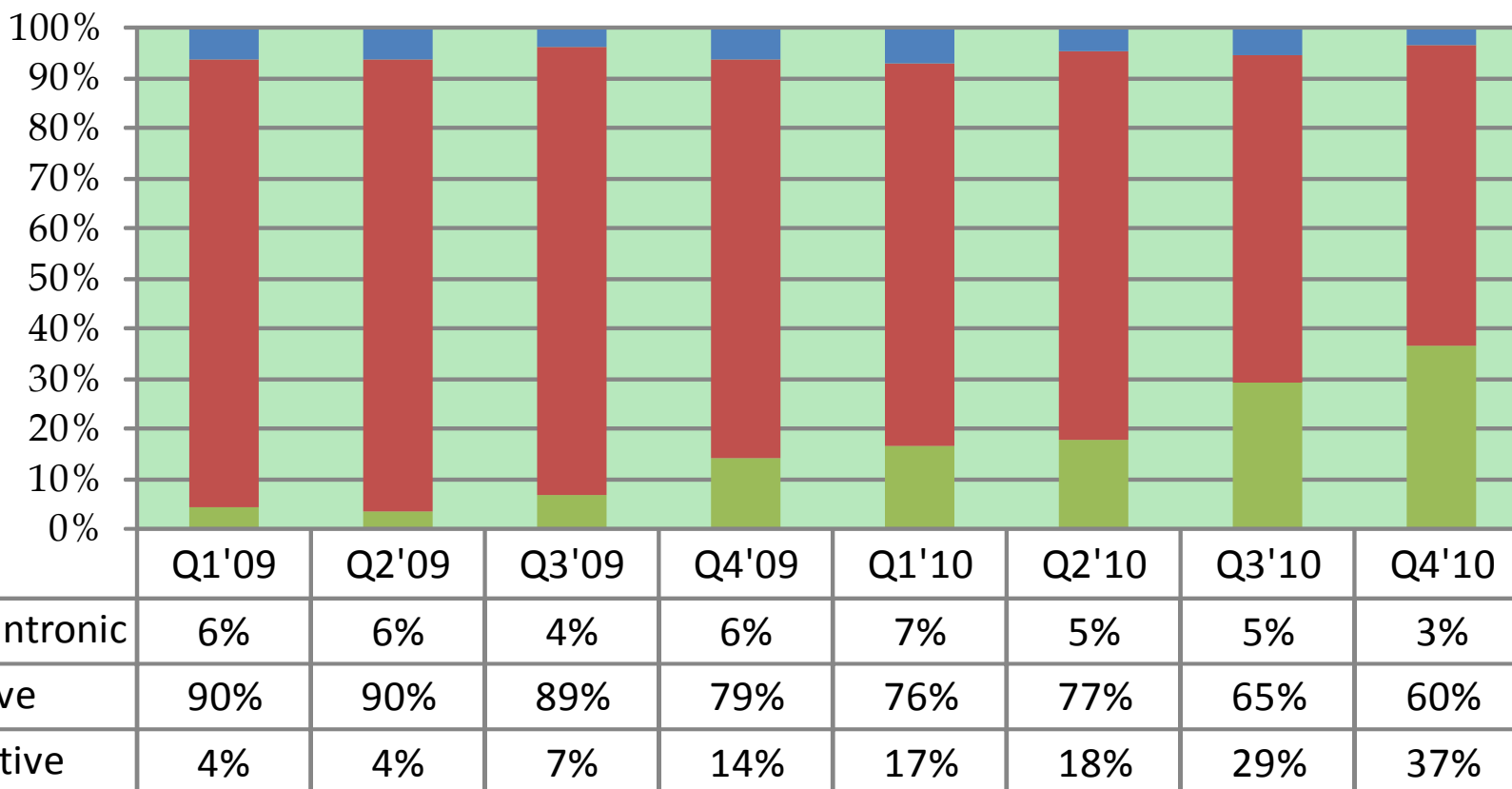
	2010	2010	QoQ	2009	YoY
(單位:新台幣百萬元)	Dec. 31	Sep. 30	%	Dec. 31	%
現金與約當現金	7,163	3,460	107.0	4,185	71.2
存貨	2,082	1,941	7.3	1,420	46.6
短期借款	19	19	-	43	-55.8
流動負債	4,583	3,711	23.5	3,172	44.5
股東權益	10,671	8,021	33.0	6,877	55.2
總資產	15,402	11,856	29.9	10,126	52.1
存貨週轉天數(天)	56	54		52	
負債淨值比	44.3%	47.81%		47.0%	
淨負債淨值比	-22.8%	4.68%		-14.0%	
股東權益報酬率(季)	3.5%	10.7%		12.5%	

2010年第四季現金流量分析

	2010	2010		2009	
(單位:新台幣百萬元)	Q4	Q3	QoQ %	Q4	YoY %
營運活動之淨現金流量	1,408	695	102.6	1240	13.5
稅後純益	330	810	-59.3	809	-59.2
折舊與攤銷	57	122	-53.3	85	-32.9
投資活動之淨現金流量	-434	-474	-8.4	-456	-4.8
購置固定資產	-341	-215	58.6	-387	-11.9
理財活動之淨現金流量	2,453	-7	-35,142.9	8	30,562.5

營業收入分析by 產品結構

1. 電阻式觸控面板占總營收比重約 60%
2. 電容式觸控面板占總營收比重約 37%





Keep in Touch!

2010 年損益資料

(單位:新台幣百萬元)	2010		2009		YoY %
	金額	%	金額	%	
營業收入	17,385	100.0	12,757	100.0	36.3
營業毛利	4,886	28.1	4,529	35.5	7.9
營業費用	1,510	8.7	1,270	10.0	18.9
營業利益	3,376	19.4	3,259	25.5	3.6
營業外收支	-258	- 1.5	45	0.4	-673.3
稅前純益	3,118	17.9	3,304	25.9	-5.6
稅後純益	2,667	15.3	2,967	23.3	-10.1
期末股本(百萬元)	142		133		
每股盈餘(元)	18.78		22.31		
所得稅稅率	14.21%		9.99%		

註：每股盈餘係以期末股本計算
2010年少數股權利益為 \$8百萬元

2010 年現金流量分析

(單位:新台幣百萬元)	2010	2009	YoY %
營業活動之淨現金流量	3,489	2,965	17.7
稅後純益	2,667	2,967	-10.1
折舊與攤銷	360	275	30.9
投資活動之淨現金流量	-1,846	-1,057	74.6
購置固定資產	-1,326	-980	35.3
理財活動之淨現金流量	1,121	253	343.1



YFO

'10 Forth Quarter Investor Conference

March 16, 2011

2010 Q4 Profit & Loss

(NT\$ MN)	2010		2010		QoQ	2009		YoY %
	Q4	%	Q3	%		Q4	%	
Revenue	4,780	100.0	4,719	100	1.3	3,987	100.0	19.9
Gross Profit	992	20.8	1,392	29.5	-28.7	1,249	31.3	-20.6
Operating exp.	365	7.6	450	9.5	-18.9	389	9.8	- 6.2
Operating income	627	13.1	942	20.0	-33.4	860	21.6	- 27.1
Non-OP income (net)	-226	-4.7	-29	-0.6	679.3	24	0.6	- 1,041.7
Income before tax	401	8.4	913	19.3	-56.1	884	22.2	- 54.6
Net Income	330	6.9	810	17.2	-59.3	809	20.3	-59.2
Shares	142		133			133		
EPS(NT\$)	2.32		6.09			6.08		
Tax rate	17.21%		10.62%			8.50%		

Note: EPS was calculated on the quarter-end shares
2010 Q4 minority interest income was \$2 MN



2010 Q4 Balance Sheets and Key Indices

	2010	2010	QoQ	2009	YoY
(NT\$ MN)	Dec. 31	Sep. 30	%	Dec. 31	%
Cash & Cash Equivalents	7,163	3,460	107.0	4,185	71.2
Inventory	2,082	1,941	7.3	1,420	46.6
Short-Term Loans	19	19	-	43	-55.8
Current Liabilities	4,583	3,711	23.5	3,172	44.5
Shareholder's Equity	10,671	8,021	33.0	6,877	55.2
Total Assets	15,402	11,856	29.9	10,126	52.1
Inventory Turnover (days)	56	54		52	
Debt/Equity	44.3%	47.81%		47.0%	
Net Debt/Equity	-22.8%	4.68%		-14.0%	
ROE (Quarter)	3.5%	10.7%		12.5%	

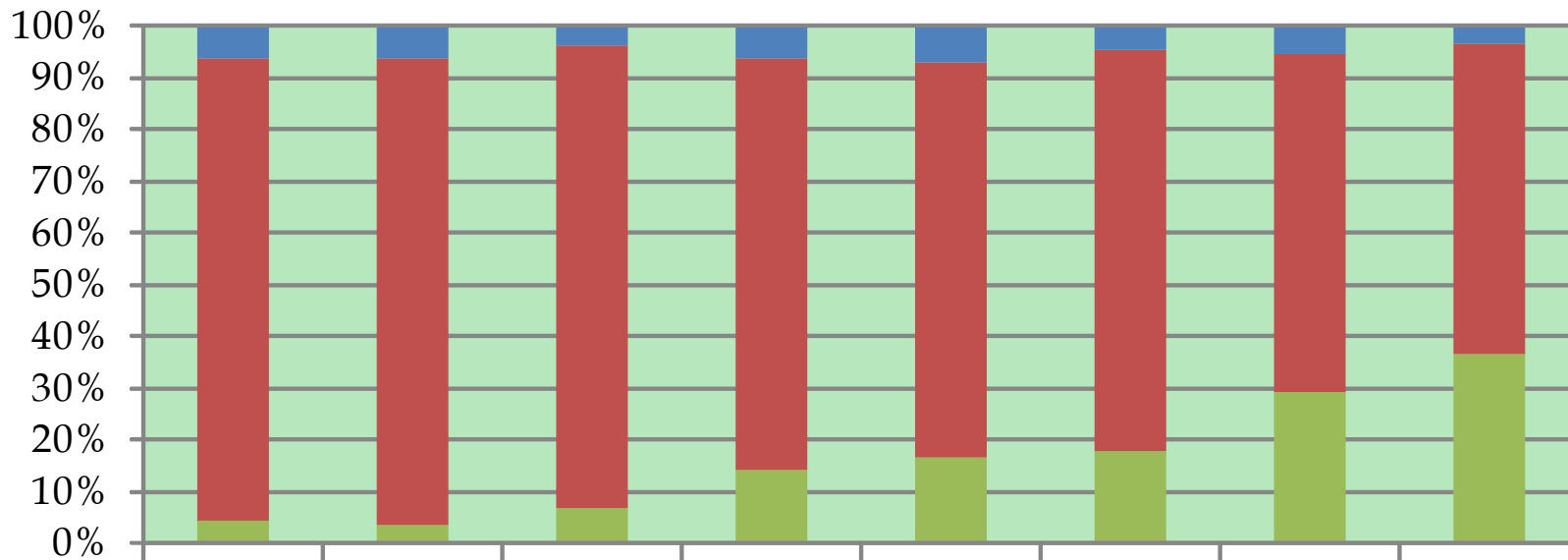
2010 Q4 Cash Flow

	2010	2010		2009	
(NT\$ MN)	Q4	Q3	QoQ %	Q4	YoY %
Net cash provided by operating activities	1,408	695	102.6	1240	13.5
Net income	330	810	-59.3	809	-59.2
Depreciation & Amortization	57	122	-53.3	85	-32.9
Net cash used in investing activities	-434	-474	-8.4	-456	-4.8
Acquisitions of property, plant and equipment	-341	-215	58.6	-387	-11.9
Net cash used in financing activities	2,453	-7	-35,142.9	8	30,562.5



YFO Revenue by Structure

1. Resistive TP accounts for 60% of the total revenue
2. Capacitive TP accounts for 37% of the revenue



	Q1'09	Q2'09	Q3'09	Q4'09	Q1'10	Q2'10	Q3'10	Q4'10
■ Mechantronic	6%	6%	4%	6%	7%	5%	5%	3%
■ Resistive	90%	90%	89%	79%	76%	77%	65%	60%
■ Capacitive	4%	4%	7%	14%	17%	18%	29%	37%



Keep in Touch!

2010 Accumulated Profit & Lost

(NT\$ MN)	2010		2009		YoY %
	Amount	%	Amount	%	
Revenue	17,385	100.0	12,757	100.0	36.3
Gross Profit	4,886	28.1	4,529	35.5	7.9
Operating exp.	1,510	8.7	1,270	10.0	18.9
Operating income	3,376	19.4	3,259	25.5	3.6
Non-OP income (net)	-258	- 1.5	45	0.4	-673.3
Income before tax	3,118	17.9	3,304	25.9	-5.6
Net Income	2,667	15.3	2,967	23.3	-10.1
Shares (M)	142		133		
EPS(NT\$)	18.78		22.31		
Tax rate	14.21%		9.99%		

Note : EPS was calculated on the year-end shares
2010 minority interest income was \$8MN

2010 Accumulated Cash Flow

(NT\$ MN)	2010	2009	YoY %
Net cash provided by operating activities	3,489	2,965	17.7
Net income	2,667	2,967	-10.1
Depreciation & Amortization	360	275	30.9
Net cash used in investing activities	-1,846	-1,057	74.6
Acquisitions of property, plant and equipment	-1,326	-980	35.3
Net cash used in financing activities	1,121	253	343.1